

Prepared For:



**PHOTOGRAPHIC
INVENTORY**

OF

EXISTING CONDITIONS

FOR

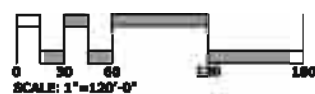
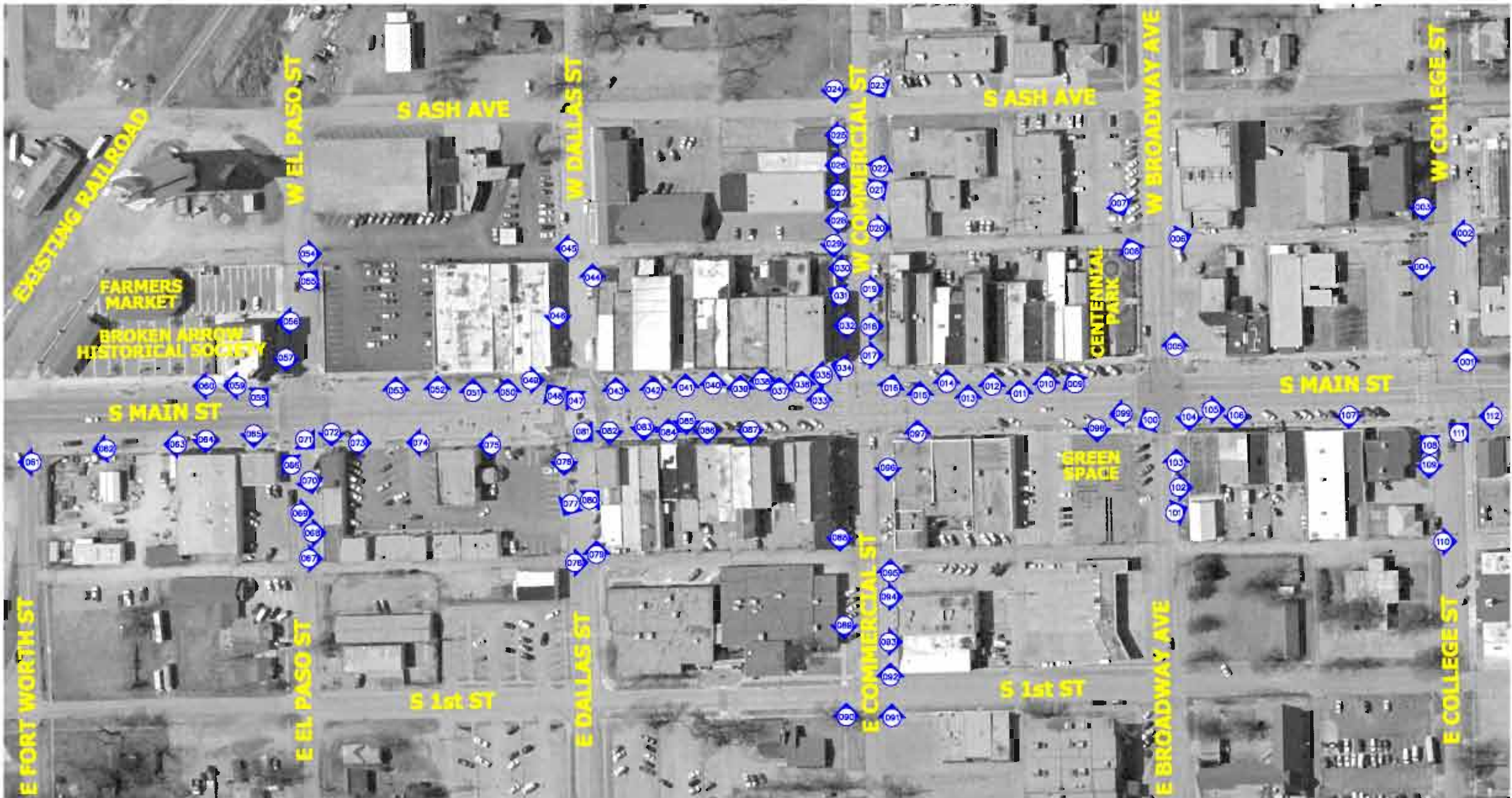
City of Broken Arrow
**DOWNTOWN MAIN STREET
STREETSCAPE PHASE 3**

Prepared By:

R.L. SHEARS COMPANY, P.C.
LANDSCAPE ARCHITECTS

1 5 2 2 S O U T H C A R S O N A V E N U E
T U L S A , O K L A H O M A 7 4 1 1 9
T E L . (9 1 8) 5 8 2 . 0 6 1 2 F A X (9 1 8) 5 8 2 . 0 6 1 3
E M A I L : r s h e a r s @ r l s h e a r s c o . c o m

URBAN DESIGN & STREETSCAPES ● PARK & RECREATION FACILITIES
MULTI-USE TRAILS ● SITE PLANNING & DESIGN ● MASTER PLANNING



LEGEND (THIS SHEET)





001 - North side sidewalk on W College St



002 - South side alleyway on W College St



003 - South side sidewalk on W College St at alleyway



004 - South side sidewalk on W College St



005 - North side driveway and sidewalk on W Broadway Ave



006 - North side alleyway on W Broadway Ave



007 - South side alleyway on W Broadway Ave



008 - South side alleyway and sidewalk on W Broadway Ave



009 - 106 & 108 S Main St



010 - 108 S Main St



011 - 110 S Main St



012 - 114 S Main St



013 - 116 & 118 S Main Street



014 - 118 S Main St



015 - 120 S Main St



016 - 122 S Main St



017 - North side sidewalk and building facade on W Commercial St



018 - North side sidewalk on W Commercial St (backdoor to 122 S Main St)



019 - 110 W Commercial St



020 - 112 W Commercial St



021 - 114 W Commercial St



022 - North side driveway and sidewalk on W Commercial St



023 - Northeast corner of W Commercial St & S Ash Ave



024 - Southeast corner of W Commercial St & S Ash Ave



025 - South side sidewalk on W Commercial St



026 - 121 W Commercial St



027 - 119 W Commercial St



028 - South side driveway, sidewalk, and alleyway on W Commercial St



029 - South side alleyway and sidewalk on W Commercial St



030 - 109 W Commercial St



031 - 107 W Commercial St



032 - South side of W Commercial St (backdoor to 200 S Main St)



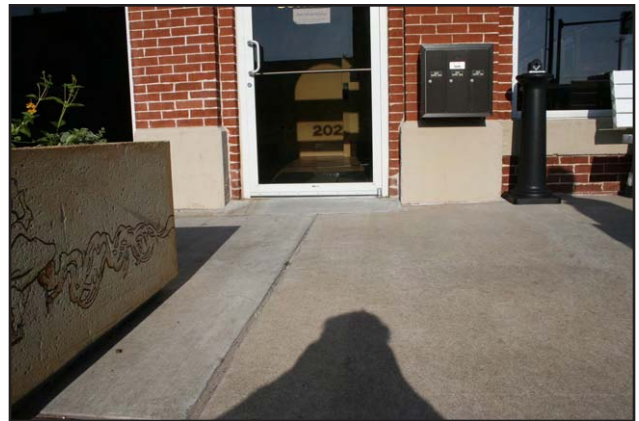
033 - 200 S Main St



034 - 200 S Main St



035 - West side sidewalk on S Main St at 200 S Main St



036 - 202 S Main St



037 - 204 S Main St



038 - 206 S Main St



039 - 210 S Main St



040 - 212 & 214 S Main St



041 - 216 S Main St



042 - 218 & 222 S Main St



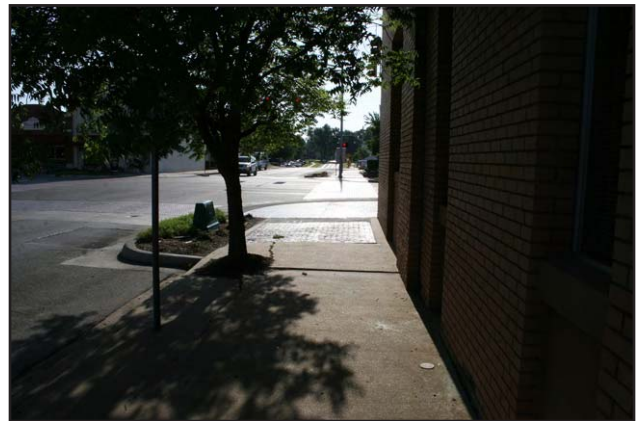
043 - 224 S Main St



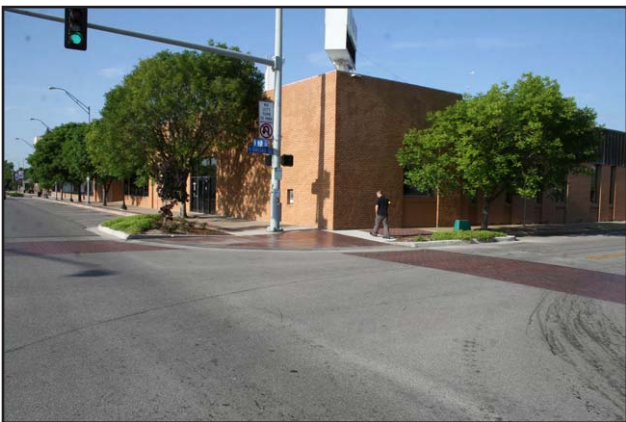
044 - North side alleyway on W Dallas St



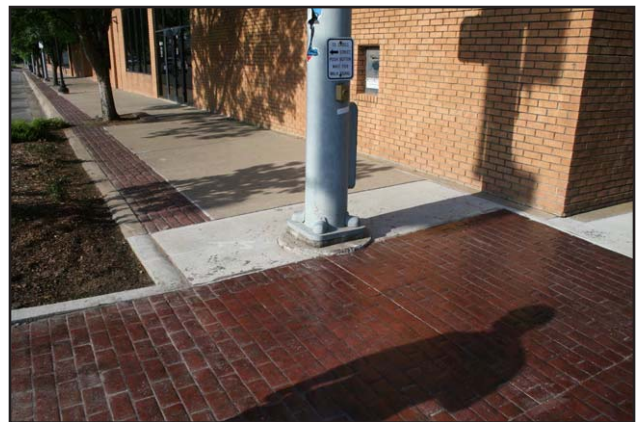
045 - South side alleyway and sidewalk on W Dallas St



046 - South side sidewalk on W Dallas St



047 - Southwest corner of S Main St & W Dallas St



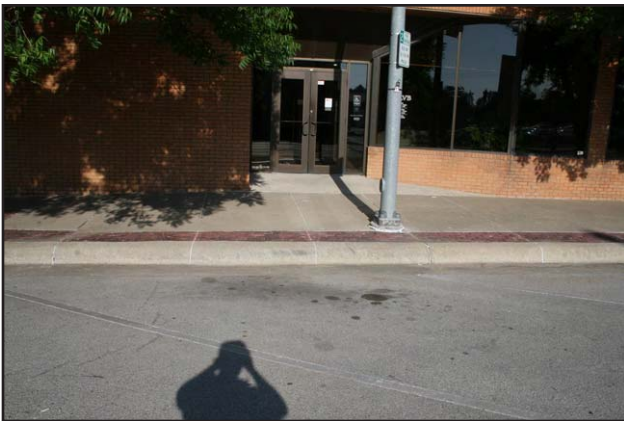
048 - Sidewalk at 302 S Main St



049 - Sidewalk at 302 S Main St



050 - 302 S Main St (North entrance)



051 - 302 S Main St (South entrance)



052 - 302 S Main St parking lot



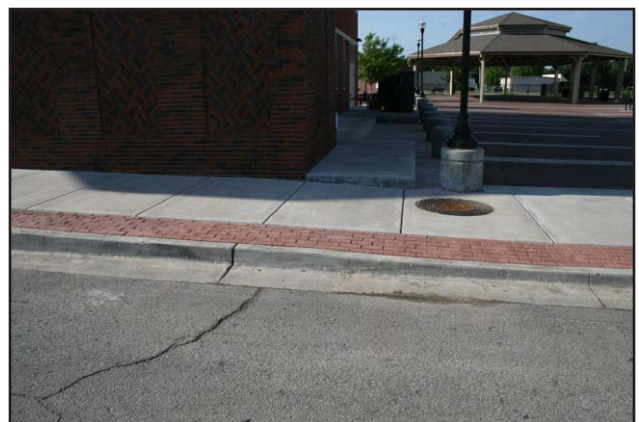
053 - 302 S Main St parking lot



054 - North alleyway on W El Paso St



055 - North alleyway and sidewalk on W El Paso St



056 - South side sidewalk on W El Paso St



057 - Southwest Corner of S Main St & W El Paso St



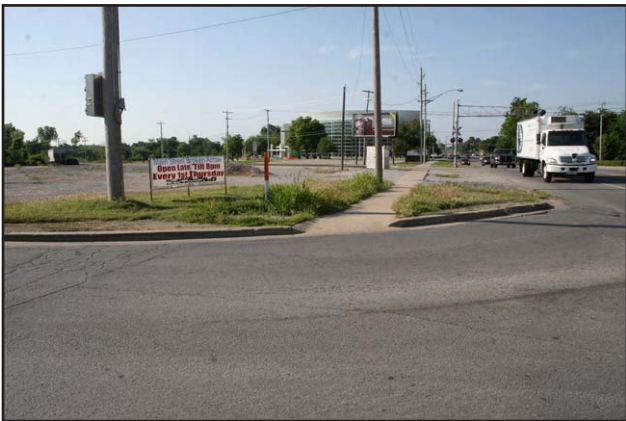
058 - Southwest Corner of S Main St & W El Paso St



059 - Sidewalk at 400 S Main St



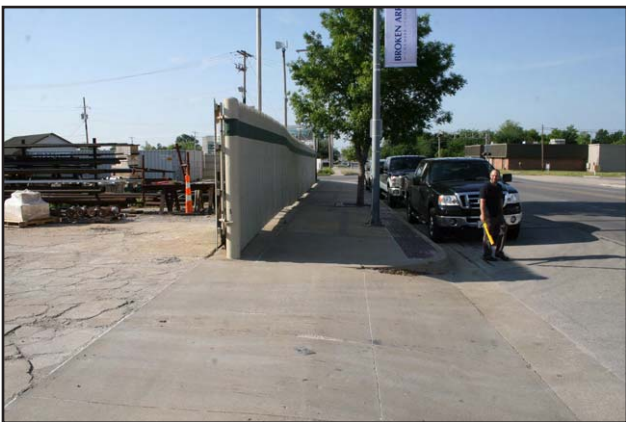
060 - West side sidewalk at Farmer's Market on S Main St



061 - Southeast corner of S Main St & E Fort Worth St



062 - East side sidewalk and tree grate on S Main St



063 - East side driveway on 400 block of S Main St



064 - 407 S Main St



065 - 405 S Main St



066 - Southeast corner of S Main St & E El Paso St



067 - 112 E El Paso St



068 - 110 E El Paso St



069 - 108 E El Paso St



070 - North side sidewalk on E El Paso St



071 - 323 S Main St



072 - S Main St



073 - East side sidewalk at 302 S Main St



074 - East side driveway and sidewalk on 300 block of S Main St



075 - Driveway and sidewalk at 311 S Main St



076 - South side sidewalk on E Dallas St



077 - South side driveway and sidewalk on E Dallas St



078 - North side alleyway on E Dallas St



079 - North side alleyway and sidewalk on E Dallas St



080 - North side driveway and sidewalk on E Dallas St



081 - Northeast corner of S Main St & E Dallas St



082 - 227 S Main St



083 - 219 S Main St



084 - East side sidewalk and brick border on 200 Block of S Main St



085 - 215 S Main St



086 - 213 S Main St



087 - 209 & 207 S Main St



088 - South side alleyway and sidewalk on E Commercial St



089 - South side curb ramp and sidewalk on E Commercial St



090 - Southwest corner of E Commercial St & S 1st St



091 - Northeast corner of E Commercial St & S 1st St



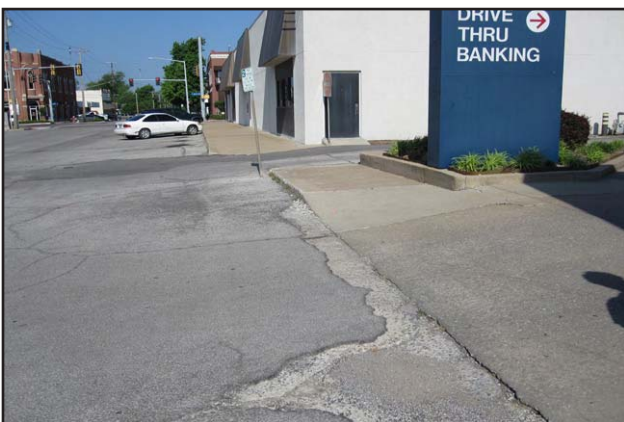
092 - Northwest corner of E Commercial St & S 1st St



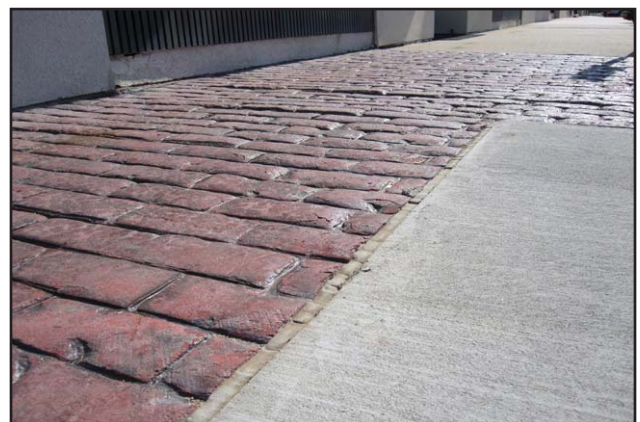
093 - 118 E Commercial St



094 - North side driveway and sidewalk on E Commercial St



095 - North side driveway, sidewalk, and alleyway on E Commercial St



096 - North side brick pavement on E Commercial St



097 - East side brick pavement on 100 Block of S Main St



098 - East side drainage issue adjacent to sidewalk on 100 Block of S Main St



099 - East side sidewalk on 100 Block of S Main St



100 - East side brick pavement and stop light footing at Southeast corner of S Main St & E Broadway Ave



101 - North side driveway and sidewalk on E Broadway Ave



102 - North side doorway and sidewalk on E Broadway Ave



103 - North side parking curb and sidewalk on E Broadway Ave



104 - Northeast corner of S Main St & E Broadway Ave



105 - East side step curb and brick pavement on 100 Block of N Main St



106 - 103 & 105 N Main St



107 - 115 N Main St



108 - Southeast corner of N Main St & E College St



109 - South side sidewalk on E College St



110 - North side driveway on E College St



111 - Northeast corner of N Main St & E College St



112 - East side sidewalk on 200 Block of N Main St