



# BROKEN ARROW

*Where opportunity lives*

## AN IMPORTANT MESSAGE FOR RESIDENTS, FROM THE UTILITIES DEPARTMENT

### **PROTECT YOUR HOME FROM SEWER BACKUPS AND COMPLY WITH CITY CODE!**

#### **IS YOUR HOME PROTECTED?**

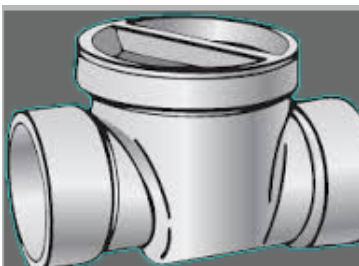
City of Broken Arrow Municipal Code requires all new buildings that are connected to the City sewer system to install a backwater device. In addition to this requirement, property owners must install a backwater device for all buildings in which the lowest floor of the building is less than one foot in elevation above the upstream manhole rim. If your home was built before 1977, you might need one! Call your plumber to make the determination.

#### **WHAT CAUSES SEWER BACKUPS?**

Solids that are washed down drains can build up in the sewer lines and cause backups. Some of the most common examples we see are: food scraps, solidified cooking grease, feminine hygiene products, "flushable" wipes, and paper towels. When these items create a blockage in the sewer pipe, the wastewater takes the path of least resistance and can backup into a toilet, sink, or bathtub. Heavy rainfall can also contribute to sewer backups when sewer lines become overwhelmed with flow.



#### **WHAT IS A BACKWATER DEVICE?**



A backwater valve is a prevention device used to prevent outbound water flowing through a dwelling's drain pipes from re-entering, or "back-flowing", into a home. A backwater valve contains an automated gate that senses a reverse flow in the pipe and completely closes the line. When the water stops coming towards the home, the gate will open back up and allow flow to resume. A backwater valve must be installed by a licensed plumber at the homeowner's expense.

#### **BACKWATER DEVICES NEED MAINTENANCE!**

You should check your backwater valve at least once per year to remove any debris that could clog the valve and to make sure all moving parts have free movement. Most valves have a cover that is easily removed to allow quick cleaning. Always wear rubber gloves and follow the manufacturer's recommendations regarding maintenance. Parts to pay close attention to are the o-ring around the lid, and the floats at each side of the flap. Replace parts as necessary. To extend the life of the valve, do not flush trash and do not put solid materials down your drain.

#### **DON'T LET THIS HAPPEN TO YOU!**

Sewer backups can be devastating to residents. They can cause unsafe and unsanitary conditions for residents. They can also cause the loss of beloved family heirlooms, and personal property. Sometimes homes must undergo a complete restoration before it is safe to move back in, and many times homeowner's insurance will not cover the cost.

### **CALL YOUR PLUMBER RIGHT AWAY! DON'T WAIT UNTIL DAMAGE IS DONE!**

Do you have questions about how to prevent sewer backups? Visit [BrokenArrowOK.gov/FROG](http://BrokenArrowOK.gov/FROG) or Call the Water Resources Division at (918) 259-7000 Ext. 7222