



February 22, 2008

To Broken Arrow Vicinity Development and Public Improvements Civil Engineers:

Re: Broken Arrow Recessed Inlet Detail Standard ST29

To All:

Enclosed is a copy of the City of Broken Arrow Recessed Inlet Detail Standard ST29. Use of this inlet is required on all public and private street projects. Cast iron grate and curb hood type inlets will be designed and constructed on streets only with approval by the Engineering and Construction Department where design situations warrant their use instead of the recessed inlet. Private storm sewer inlets on parking lots, private driveways, etc. can be specified with either type of inlet at the property owner's direction. This detail and flow intercept equations and charts can also be found at ftp.brokenarrowok.gov on the City of Broken Arrow FTP site. When specifying these inlets on plans, refer to the inlets as ST29-4 for a four foot wide inlet opening, ST29-6 for a 6 foot wide inlet opening, or ST29-8 for an 8 foot wide opening.

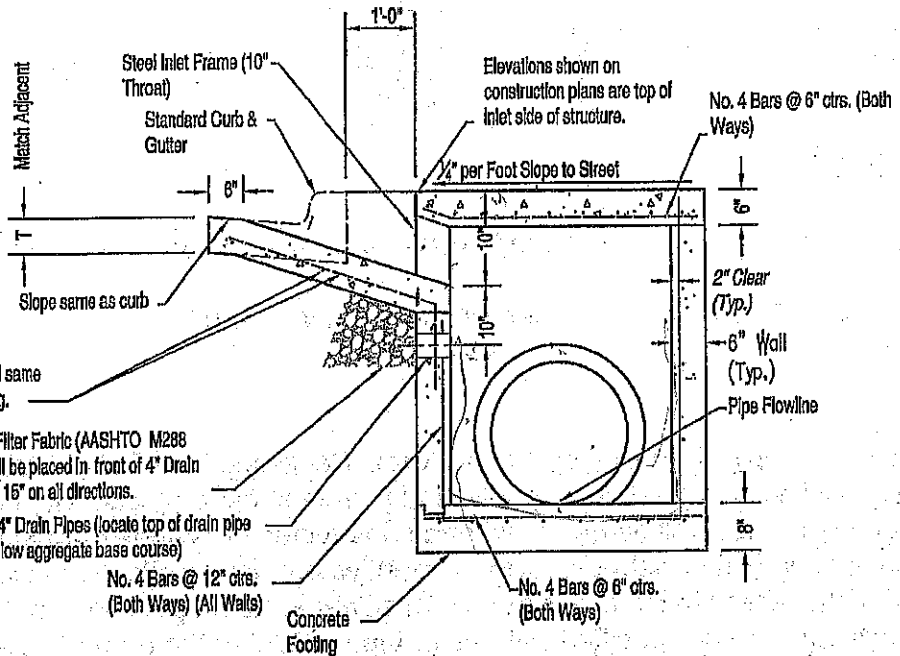
If you require additional information please contact me at jbigby@brokenarrowok.gov or at (918) 259-2400 ext. 5241.

Sincerely,

Jeff Bigby, PE, CFM
Stormwater Manager

Enclosures (1)

Cc: Kenneth Schwab, Director of Engineering and Construction
Tom Hendrix, City Engineer
Michael Skates, Development Services Director
Jeff Westfall, Project Engineer
Steve Arant, Streets and Stormwater Director
Don Sanders, Construction Division Chief



4-No. 4 Bars shall be placed same as Curb & Gutter Reinforcing.

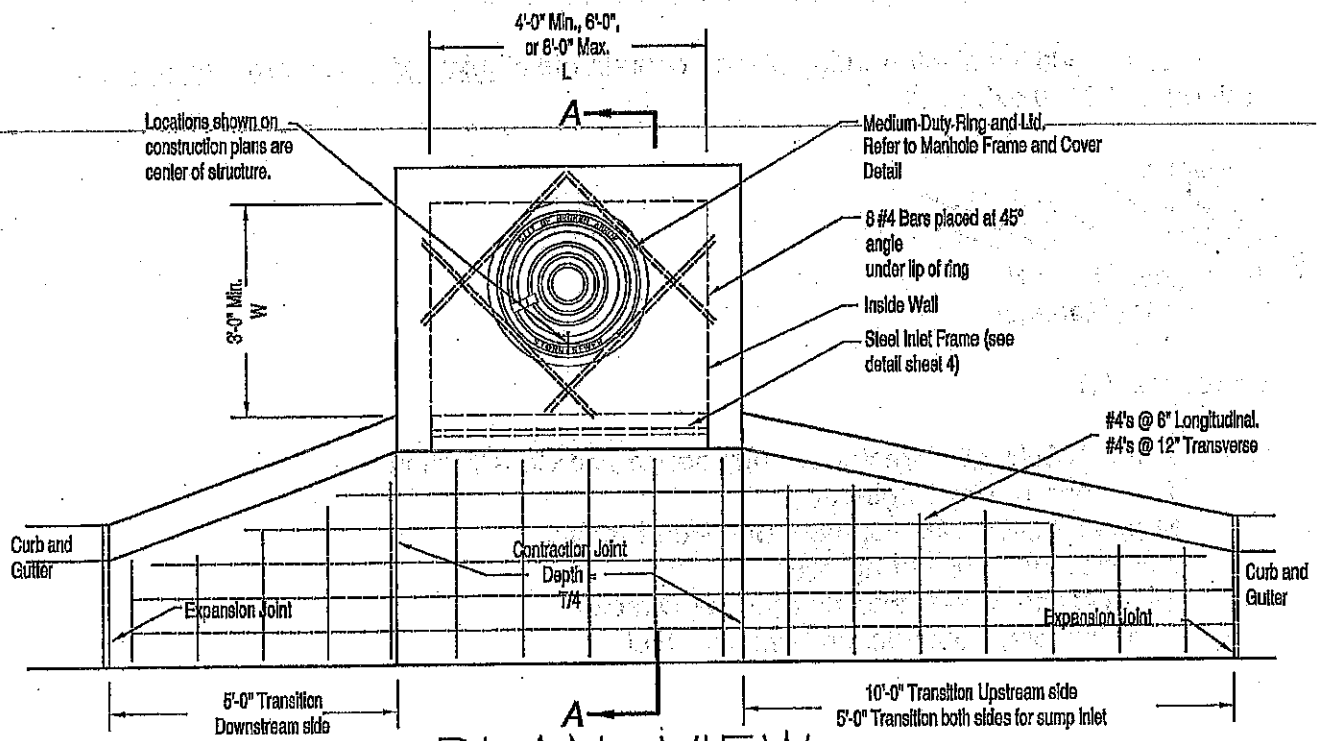
1/4" Galv. Hardware Cloth and Filter Fabric (AASHTO M288 Class A or approved equal) shall be placed in front of 4" Drain Pipe prior to placing #57 stone 16" on all directions.

2-4" Drain Pipes (locate top of drain pipe below aggregate base course)

No. 4 Bars @ 12" ctrs. (Both Ways) (All Walls)

Concrete Footing

SECTION A-A



PLAN VIEW RECESSED CURB INLET DETAIL (INLET ST29)

Sheet 1 of 4

CITY OF BROKEN ARROW

STANDARD DRAWING:	STD ST 29
LAST REVISION DATE:	02/11/08
DRAWN BY: WGS	CHECKED BY: JTB
APPROVED: TDH	DATE: 02/11/08

T:\Engineering\Bmp\Standards\Construction\Drawings\Storm Paving\STDST29.dwg

NOTES

All construction shall be in accordance with the City of Broken Arrow Standard Construction Specifications.

The first dimension listed in the the construction plans shall be the "L" dimension and the second dimension shall be the "W" dimension. The minimum "W" dimensions shall be in accordance with the details shown.

The expansion joints shown shall be performed $\frac{3}{4}$ " fiber mesh material. Fiber material shall meet the following specifications ASTM D1751, ASSHTO M 213. Fiber material shall be W.R. Meadows, SEALTIGHT FIBRE EXPANSION, or approved equal.

All Concrete shall meet the City of Broken Arrow Class BA1.

All exposed edges shall have a $\frac{3}{4}$ " chamfer.

Inlet tops shall follow the slope of the top of curb line. Inlet tops shall slope $\frac{1}{4}$ " per foot to the street.

Inlet tops that meet sidewalks or other concrete construction shall have a continuous expansion joint on all sides that meet other concrete structures.

All Storm sewer structures shall be cast-in-place or pre-cast.

All pre-cast structures will have shop drawings approved by the Director of Engineering and Construction or his designee prior to placement.

All pipe connections to pre-cast structures shall have a minimum 6" thick collar of Class BA1 concrete on the exterior of the Inlet wall.

STEEL INLET FRAME NOTES

All welds shall be performed in accordance with appropriate AWS specifications and procedures.

All welds on exposed surfaces shall be dressed so as to provide a pleasing finished appearance.

The entire frame shall be hot dipped zinc coated in accordance with ASTM A-123.

RECESSED CURB INLET DETAIL

Sheet 2 of 4

CITY OF BROKEN ARROW

STANDARD DRAWING: STD ST 29

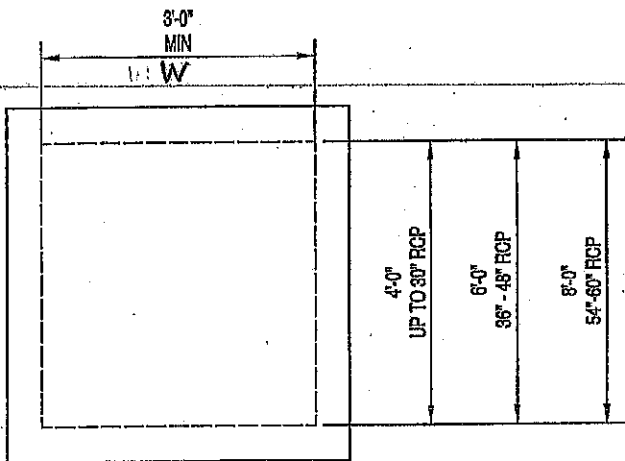
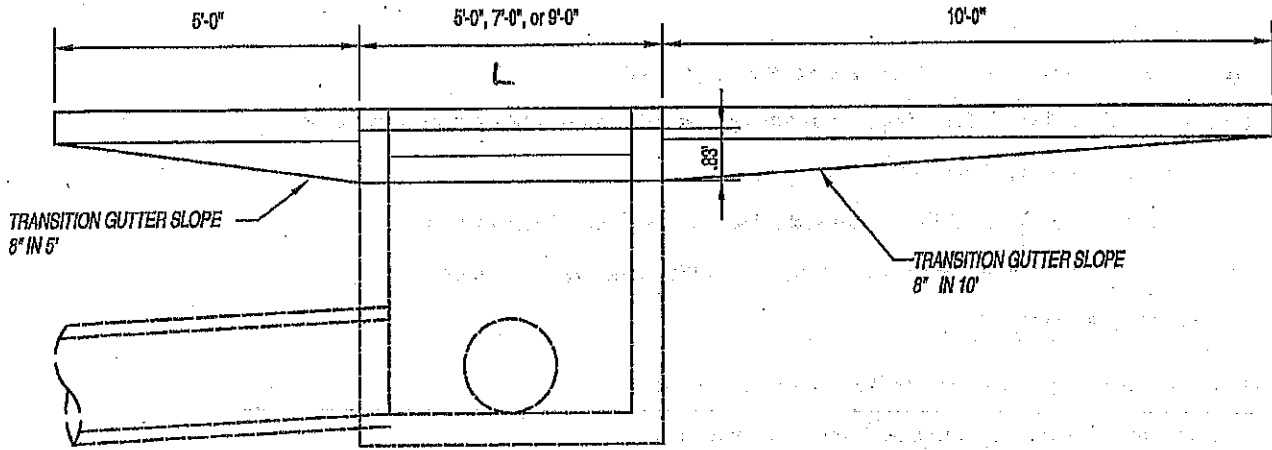
LAST REVISION DATE: 02/11/08

DRAWN BY: WGS

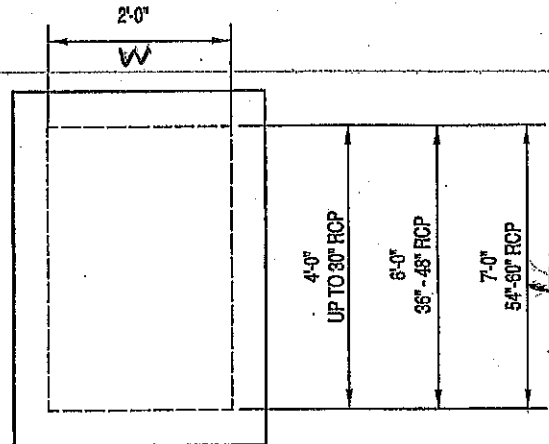
CHECKED BY: JTB

APPROVED: TDH

DATE: 02/11/08



INLET WITH ACCESS MANHOLE



INLET WITHOUT ACCESS MANHOLE
FOR USE ON THE UPSTREAM END OF A STORM SEWER LINE

MINIMUM "W" DIMENSIONS

RECESSED CURB INLET DETAIL

Sheet 3 of 4

CITY OF BROKEN ARROW

STANDARD DRAWING: STD ST 29

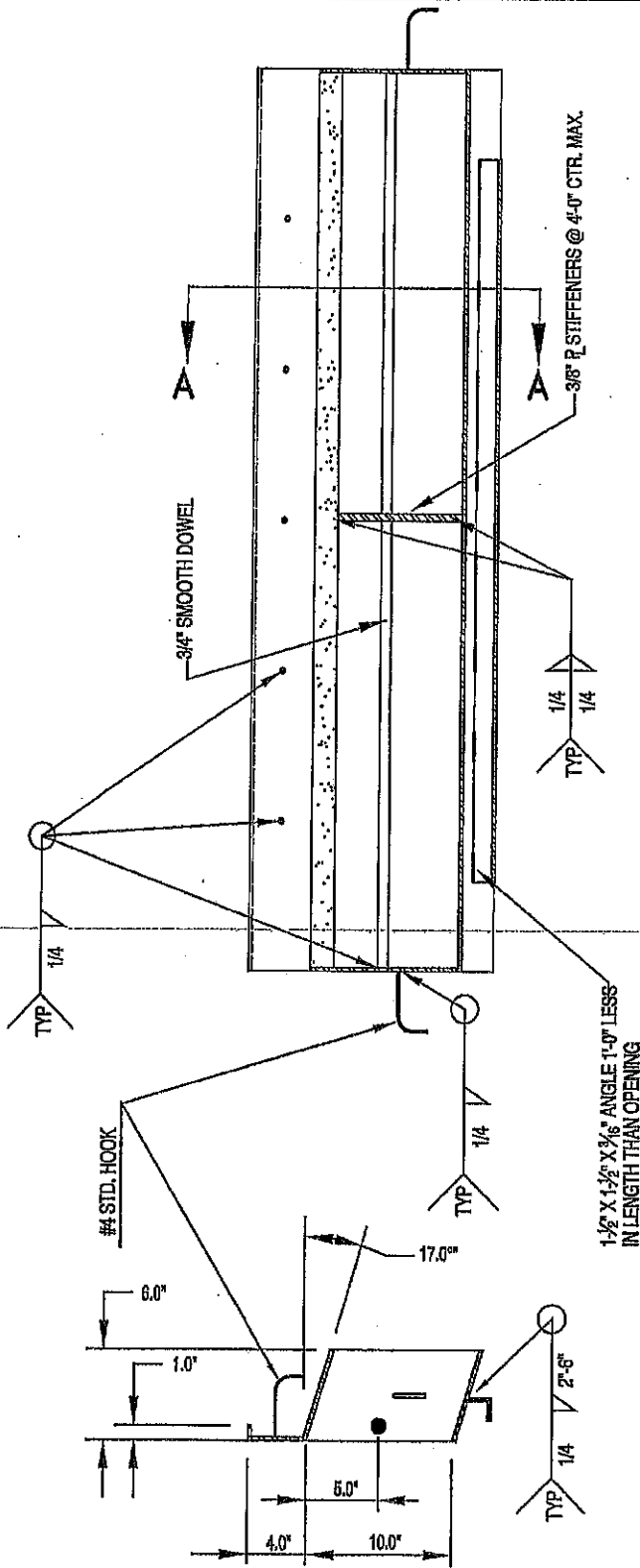
LAST REVISION DATE: 02/11/08

DRAWN BY: WGS

CHECKED BY: JTB

APPROVED: TDH

DATE: 02/11/08



FRONT VIEW

SECTION A-A

RECESSED CURB INLET DETAIL

Sheet 4 of 4

CITY OF BROKEN ARROW

STANDARD DRAWING: STD ST 29

LAST REVISION DATE: 02/11/08

DRAWN BY: WGS

CHECKED BY: JTB

APPROVED: TDH

DATE: 02/11/08