

**To:** Honorable Mayor and City Councilors  
**From:** Michael Spurgeon, City Manager  
**Date:** May 19, 2017  
**Re:** Notes to Council

---

### **1. STAFF REPORTS / ITEMS REQUIRING IMMEDIATE ATTENTION**

- Oklahoma Legislative Report – May 14, 2017
- Staff Memo – BAPS Freshman Academy Expansion Project

### **2. GENERAL CORRESPONDENCE / NOTIFICATION**

- Press Release - Omaha Street Resurfacing to Begin May 23

### **3. SPECIAL EVENTS / ACTIVITIES**

- N/A

Respectfully submitted,



Michael L. Spurgeon

jmh  
Attachments

# 1. STAFF REPORTS / ITEMS REQUIRING IMMEDIATE ATTENTION



## **The Smaligo Group, LLC**

Relationships. Resources. Results.

Lesa K. Smaligo, Principal

## **Oklahoma Legislative Report for May 14, 2017**



*Prepared for:* **City of Broken Arrow**

---

### **Budget Update**

Lawmakers and the public should have a clearer picture by Tuesday of what revenue-related measures lawmakers plan to consider to address fiscal year 2018's \$878 million shortfall, Senate Majority Floor Leader Greg Treat said Friday.

The Oklahoma Constitution prohibits the Legislature from taking up revenue measures during the final five days of the legislative sessions, May 22 to 26 this year. That means revenue bills must be passed by Friday, May 19, or Saturday, May 20, at the latest.

The Tuesday deadline, Treat explained, is needed so the bills can be considered in both the House and the Senate under each chamber's individual and joint rules.

Gov. Mary Fallin has made a point on social media of noting lawmakers have sent her and she has signed bills that will provide about \$45 million in new revenue for FY2018 so far. In a May 3 press conference, she said, "...we are nowhere close to getting our job done."

She has said she would veto a budget plan that did not provide adequate funding for state services.

An \$878 million shortfall would require across-the-board budget cuts totaling nearly 18.0 percent. House Republicans and Democrats talked Thursday of a \$400 million plan made up of a cigarette tax increase, \$215; limit on itemized deductions except charitable contributions, \$101

million; eliminating of a group of oil and gas tax incentives, \$45 million; and expansion of casino gaming, \$40 million.

A cigarette tax increase bill is awaiting House consideration. **HB 2372**, by Rep. Leslie Osborn, R-Mustang, and Sen. Kimberly David, R-Porter, adds a \$1.50 per pack tax to cigarettes. The bill creates the Health Care Authority Enhancement Fund, the Mental Health and Substance Abuse Enhancement Fund, the Human Services Enhancement Fund, Oklahoma State University Medical Authority Enhancement Fund and the Health Department Enhancement Fund and apportions the first \$185 million among the funds for FY2018. It apportions the full amount to the Health Care Enhancement Fund for subsequent fiscal years.

If approved by the House, it then must be approved by the Senate.

**HB 2403**, which sets a \$17,000 limit on the net amount of itemized deductions, excluding contributions to charitable organizations, allowed on an Oklahoma individual tax return for tax years 2017, 2018 and 2019, passed the Senate Joint Committee on Appropriations (JCAB) on a 19 to 18 vote Friday. It was approved Thursday by the House's JCAB and now awaits full House consideration.

Also awaiting House consideration is the bill eliminating a group oil and gas incentives. **HB 2377**, by Osborn and Porter, establishes a July 1, 2017, sunset date for the following gross production tax credit: secondary recovery projects; tertiary recovery projects; reestablished production; production enhancement projects; production of oil, gas or oil and gas from wells spudded or reentered between July 1, 1995, and July 1, 2015; and three-dimensional seismic shoots on or after July 1, 2000. The bill establishes a Sept. 30, 2017, deadline to submit claims for refunds. It provides that claims for refunds for production periods ending on or before December 31, 2016, shall be paid pursuant to the provisions of this subsection. It requires claims for refunds be paid in equal payments over 36 months and requires the first payment be made after July 1, 2018, but prior to August 1, 2018. The bill requires the Tax Commission to provide not later than June 30, 2018, a schedule of rebates to be paid out over the 36-month period to the operator or designated interest owner.

The proposal to expand casino gaming seems unlikely to pass. The Senate JCAB voted down its own version of the bill Friday, **SB 857**. It has yet to take up **HB 2376**, the House's original proposal.

SB 857, by David and Osborn, permits non-house-banked table games involving dice or roulette wheels. It also permits wagering on sporting events under certain conditions. The bill allows for modifications to the

Model Tribal Gaming Compact in relation to the definition of "covered games." It allows a tribe to conduct additional forms of gaming under the compact if additional game offerings are approved by the Legislature. It approves an additional game offering in the form of non-house-banked table games. It defines "non-house-banked table game." The bill allows the tribe and governor to negotiate and execute a supplement to the tribal-state gambling compacts to operate non-house banked table games. It requires the supplement to the compact to be signed by provided individuals to be effective. It allows supplements to any compact to include other terms negotiated and agreed on by the tribe and governor. It requires a copy of the supplement to be submitted to the Secretary of the Interior for approval and publication. It requires the tribe, upon approval, to be deemed in agreement to pay a percentage of the monthly net win from non-house-banked table games. It requires the tribe be entitled to keep an amount equal to state payments from the common pool. It provides for construction. It requires the posting of any compact supplement to the Secretary of State's website 30 days prior to execution. It requires no compact modification, compact extension, compact supplement or other instrument of the like be effective until the posting.

HB 2376, by Osborn and David, authorizes non-house-banked table games involving a wheel, ball or dice to be used within the parameters of the Model Tribal Gaming Compact.

Those proposals, if all were approved, and those already approved fill approximately one-half of the hole. That would mean approximately 9.0 percent across-the-board cuts for agencies. Those cuts would be higher if agencies like the Department of Education, Department of Human Services and Oklahoma Health Care Authority were held harmless.

---

## **Priority Issues**

### **State revenue misses estimate by 13 percent**

State legislators said that April revenues would likely offset midyear borrowing from the state's Rainy Day Fund, but the numbers are in, and receipts were 13 percent below projections. The Office of Management and Enterprise Services announced the report Tuesday afternoon. The release said the shortcoming only adds to uncertainty, as agencies fear further cuts and the Legislature struggles to reach a budget agreement.

April receipts totaled about \$612 million, about \$90 million under projection. Fiscal 2017 collections so far are down about \$190 million.

### **Income tax bill heads to governor**

House Bill 2348 would decouple the standard deduction rate for personal income taxes and freeze it at the fiscal 2017 limit. Under current law, Oklahoma's standard deduction rate has to match the federal rate, which gets raised regularly to adjust for inflation. The Trump administration has pitched raising the rate to \$15,000, more than doubling it.

### **Bill to cap itemized deductions passes House committee**

House Republicans pitched a revenue measure that could raise about \$166 million, and it would do so largely by collecting more taxes from wealthy families. Unlike earlier revenue measures that were criticized for targeting the poor, a handful of the bills pitched during a House committee on Monday would affect higher earners and corporations. One of them, [House Bill 2347](#), has gotten blowback since it passed 23-2.

### **Oklahoma Senate Approves Repeal of Income Tax Cut Trigger**

The Oklahoma Senate has given final legislative approval to a bill to repeal the trigger that would cut the state's individual income tax rate from 5 percent to 4.85 percent. The Senate voted 32-9 for [the bill](#) Monday, sending it to Gov. Mary Fallin who is expected to sign it. The bill would repeal 2014 legislation that provides a mechanism to reduce Oklahoma's top tax rate when tax collections increase by about \$100 million annually. Since then, revenues have plummeted and the state faces a budget hole of \$878 million next year. State finance officials have encouraged lawmakers to repeal the income tax cut until state revenues stabilize.

### **Lawmakers redo deduction bill to exclude charities**

Legislation that would cap itemized deductions on state tax returns now excludes charitable giving from the limit. The latest version of the bill came about after concerns were expressed by nonprofits to carve out donations. The new bill, [House Bill 2403](#), still caps the amount of deductions that can be claimed to \$17,000 per year for the next three tax seasons.

Itemized deductions are useful in lowering a person's tax bill. Most Oklahomans take the simpler standard deduction, but taxpayers also can choose to identify and separately list each one.

A deduction can be claimed on charitable donations, medical expenses, property taxes, mortgage interest and some other out-of-pocket expenses.

The original bill would have boosted state revenue by an estimated \$166 million, but the latest version would draw in \$101.8 million, according to an analysis by House staff. The decision by House leadership to re-examine the bill came after 48 hours of heavy pressure from the nonprofit community and others, including the business community

---

## **General Legislative Updates**

### **[Oklahoma budget crisis: Impasse over gambling sinks \\$400M revenue bill](#)**

An expansion of tribal casino roulette and dice games helped sink a \$400 million revenue package offered to Oklahoma Senate leadership Monday. Democrats and Republicans in the House and Senate offered differing accounts of what happened, but both sides of the Capitol said that the casino measure wouldn't find support in the Senate. State Sen. Mike Schulz, the Senate president pro tem, said he opposes allowing Las Vegas-style roulette and dice games in Oklahoma. The proposal, the details of which have not been publicly released, reportedly includes a provision that could eventually allow sports betting.

### **[Oklahoma Gov. Fallin vetoes payday loan bill](#)**

A payday loan bill that had drawn strong opposition from many church leaders because of its financial impact on low-income families was vetoed Friday by Gov. Mary Fallin.

## **Oklahoma Senate leader says teacher pay raise chances "slim to none" this year**

As the Oklahoma legislative session heads into its final weeks, the leader of the Oklahoma Senate said it is unlikely teachers will receive a pay raise in 2017.

Both the Oklahoma House of Representatives and the Oklahoma Senate have passed teacher pay raise bills this session, but Senate President Pro Tem Mike Schulz says neither bill was heard by the other side.

"Teacher pay has been something we've talked about a long time, certainly the state question that was on the ballot last November brought a lot of attention to it," Schulz said. "In the senate, our position has always been we are dedicated to do a pay raise. It's going to be implemented over time somewhere in the neighborhood of \$5,000 to \$6,000 in a two to three year period."

Senator Schulz said there is a \$900 million shortfall in the budget this year which makes it nearly impossible to fund the pay raise this year.

"It'd be pretty silly to look at the common education budget and say we're going to cut you by two-percent but then give you a teacher pay raise," Schulz said. "That just seems silly and foolish to us to cut them on one hand but give them money on the other."

Senator Schulz said he does think a teacher pay raise will happen in the future, but the only thing the legislature controls is the minimum salary that teachers receive.

## **Oklahoma schools now shorted \$93 million this year in state aid as revenue misses expectations again**

Public schools learned Wednesday that their monthly payment from the state of Oklahoma would be shorted by an additional \$6.8 million, bringing the total reductions since January to \$93.4 million. The Oklahoma State Department of Education sent out a memo Wednesday ahead of Thursday payments to local schools notifying them that state revenue collections continue to fall short of expectations in both the 1017 Fund and the Common Education Technology Revolving Fund.



### **City Council looking for ways to help 'food deserts' other than grocery store moratorium**

City Councilors discussed a proposed moratorium on grocery stores in Tulsa's "food deserts" Wednesday, opting to look for other ways to bring healthier food choices to areas of need. The problem, as discussed Wednesday, is that full-service grocery stores may be getting stifled out of the market in food deserts due to the prevalence of grocery or convenience stores that offer only basic food items without fresh produce.

### **TPS superintendent makes final pitch on budget cut recommendations**

Tulsa Public Schools Superintendent Deborah Gist presented her final recommendations for budget reductions for the 2017-18 school year at a special board meeting Thursday evening. As TPS leaders continue to anticipate a \$12 million reduction in state aid for next school year, the school board is expected to vote Monday on Gist's recommendations to cut the district's budget to meet that funding gap.

### **Oklahoma's economy continues to show signs of rebound**

Oklahoma took in more state revenues in April than it did in the same month last year as the state's economy continued to show signs of a rebound, state Treasurer Ken Miller announced Friday. The state's gross receipts for April were about \$1.2 billion, up \$34.1 million, or 2.9 percent, compared to April 2016.

### **Unemployment rate dips in 55 Oklahoma counties**

State officials say the unemployment rate is dropping in most Oklahoma counties, though some counties remain well above the national rate for people out of work. The statewide jobless rate was 4.6 percent in February, just below the national rate of 4.7 percent.

### **Bill to expand eligibility for Oklahoma's Promise scholarships would be a win for all Oklahomans**

The Oklahoma Legislature is close to passing a bill ([SB 529](#)) to make Oklahoma's Promise scholarships available to more students. Available since 1996, these scholarships cover the cost of tuition for in-state

students at an Oklahoma public college or university if students complete a series of college-readiness requirements before high school graduation and maintain a passing GPA once in college. Expanding access to the program is necessary if Oklahoma wants to compete in the new economy where most high-paying jobs require advanced education.

### **Extended horizontal drilling compromise reached by major Oklahoma energy associations**

Longer horizontal drilling in nonshale formations in Oklahoma would be allowed under compromise legislation unveiled Tuesday.

Senate Bill 867 is supported by the Oklahoma Oil and Gas Association, Oklahoma Independent Petroleum Association and the Coalition of Oklahoma Surface and Mineral Owners.

Notably absent from the agreement is the Oklahoma Energy Producers Alliance, a new group formed by longtime operators of vertical wells. That group remains concerned about the encroachment of horizontal drilling on their vertical wells.

SB 867, by Senate President Pro Tempore Mike Schulz, R-Altus, and House Speaker Charles McCall, R-Atoka, would allow horizontal drilling longer than one mile in nonshale formations. Under current law, companies can only drill such "extended laterals" in shale formations or formations with "shale-like" characteristics.

### **Oklahoma lawmakers could halt Medicaid privatization**

Oklahoma House lawmakers will consider whether to halt progress on privatizing Medicaid for the state's aged blind and disabled population.

After receiving direction from the Legislature, the Oklahoma Health Care Authority began soliciting proposals last year from private companies who want to take over that part of Medicaid's mission. Under the plan, a company picked to run the program would receive money up front to coordinate and integrate care for complex treatment, like those developed to address chronic illness.



---

*INTEROFFICE MEMO*

**To:** Honorable Mayor and City Councilors  
**From:** Jennifer Hooks, Executive Assistant to the City Manager  
**Date:** May 15, 2017  
**Re:** Site Plan for BAPS Freshman Academy Expansion

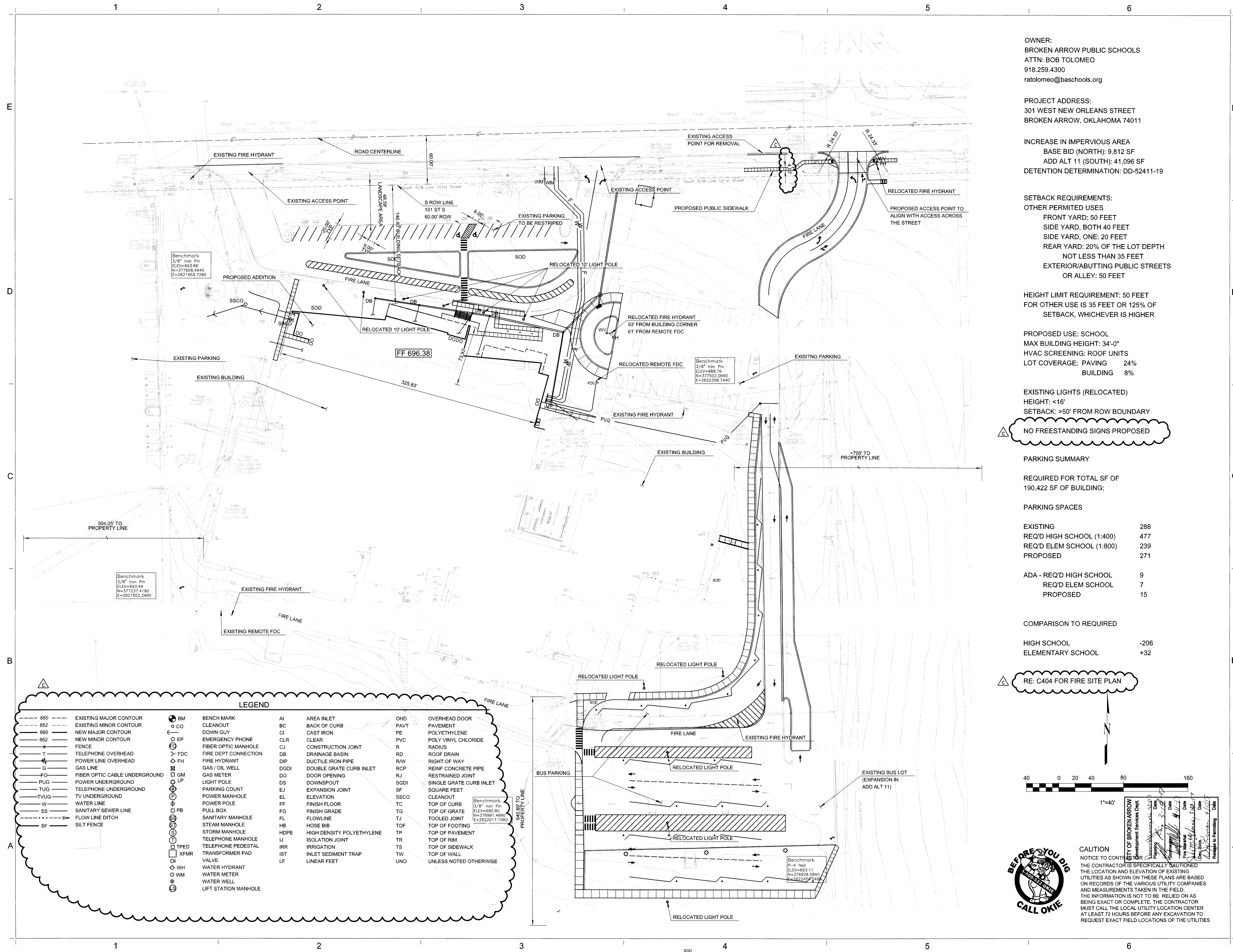
---

Please find attached the site plan for the Freshman Academy Expansion. This work includes relocating the access road on the south side of New Orleans to align with First Place across the street.

Respectfully submitted,

Jennifer Hooks

Attachment



OWNER:  
 BROKEN ARROW PUBLIC SCHOOLS  
 ATTN: BOB TOLOMEO  
 918.259.4300  
 ratolomeo@baschools.org

PROJECT ADDRESS:  
 301 WEST NEW ORLEANS STREET  
 BROKEN ARROW, OKLAHOMA 74011

INCREASE IN IMPERVIOUS AREA  
 BASE BID (NORTH): 9,812 SF  
 ADD ALT 11 (SOUTH): 41,096 SF  
 DETENTION DETERMINATION: DD-52411-19

SETBACK REQUIREMENTS:  
 OTHER PERMITTED USES  
 FRONT YARD: 50 FEET  
 SIDE YARD, BOTH 40 FEET  
 SIDE YARD, ONE: 20 FEET  
 REAR YARD: 20% OF THE LOT DEPTH  
 NOT LESS THAN 35 FEET  
 EXTERIOR/ABUTTING PUBLIC STREETS  
 OR ALLEY: 50 FEET

HEIGHT LIMIT REQUIREMENT: 50 FEET  
 FOR OTHER USE IS 35 FEET OR 125% OF  
 SETBACK, WHICHEVER IS HIGHER

PROPOSED USE: SCHOOL  
 MAX BUILDING HEIGHT: 34'-0"  
 HVAC SCREENING: ROOF UNITS  
 LOT COVERAGE: PAVING 24%  
 BUILDING 8%

EXISTING LIGHTS (RELOCATED)  
 HEIGHT: <16'  
 SETBACK: >50' FROM ROW BOUNDARY

NO FREESTANDING SIGNS PROPOSED

PARKING SUMMARY

REQUIRED FOR TOTAL SF OF  
 190,422 SF OF BUILDING;

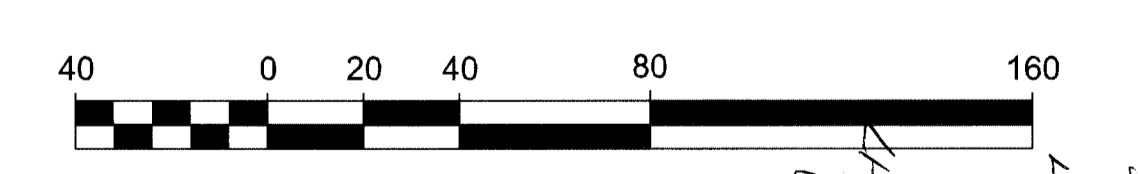
PARKING SPACES

EXISTING	288
REQ'D HIGH SCHOOL (1:400)	477
REQ'D ELEM SCHOOL (1:800)	239
PROPOSED	271
ADA - REQ'D HIGH SCHOOL	9
REQ'D ELEM SCHOOL	7
PROPOSED	15

COMPARISON TO REQUIRED

HIGH SCHOOL	-206
ELEMENTARY SCHOOL	+32

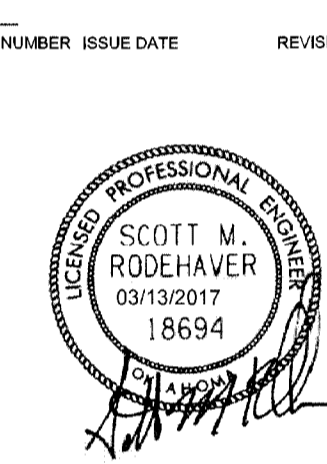
RE: C404 FOR FIRE SITE PLAN



CAUTION  
 NOTICE TO CONTRACTOR  
 THE CONTRACTOR IS SPECIFICALLY CAUTIONED  
 THE LOCATION AND ELEVATION OF EXISTING  
 UTILITIES AS SHOWN ON THESE PLANS ARE BASED  
 ON RECORDS OF THE VARIOUS UTILITY COMPANIES  
 AND MEASUREMENTS TAKEN IN THE FIELD.  
 THE INFORMATION IS NOT TO BE RELIED ON AS  
 BEING EXACT OR COMPLETE. THE CONTRACTOR  
 MUST CALL THE LOCAL UTILITY LOCATION CENTER  
 AT LEAST 72 HOURS BEFORE ANY EXCAVATION TO  
 REQUEST EXACT FIELD LOCATIONS OF THE UTILITIES

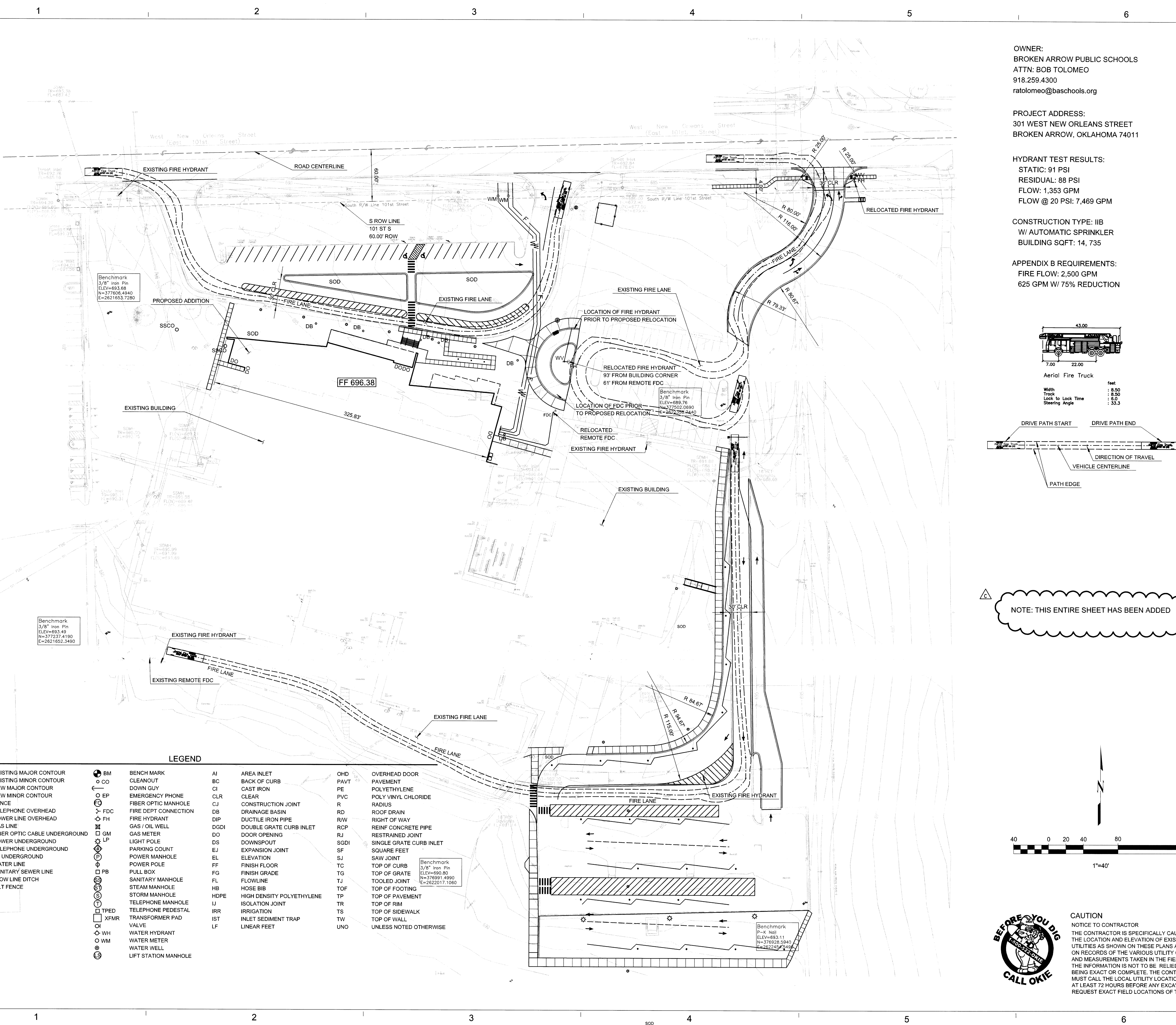
**LEGEND**

--- 660 ---	EXISTING MAJOR CONTOUR	⊙ BM	BENCH MARK	AI	AREA INLET	OHD	OVERHEAD DOOR
--- 662 ---	EXISTING MINOR CONTOUR	○ CO	CLEANOUT	BC	BACK OF CURB	PAVT	PAVEMENT
--- 680 ---	NEW MAJOR CONTOUR	○ EG	DOWN GUY	CI	CAST IRON	PE	POLYETHYLENE
--- 662 ---	NEW MINOR CONTOUR	○ EP	EMERGENCY PHONE	CL	CLEAR	PVC	POLY VINYL CHLORIDE
---	FENCE	⊙ FDC	FIBER OPTIC MANHOLE	CJ	CONSTRUCTION JOINT	R	RADIUS
---	TELEPHONE OVERHEAD	⊙ FH	FIRE DEPT CONNECTION	DB	DRAINAGE BASIN	RD	ROOF DRAIN
---	POWER LINE OVERHEAD	⊙ FHT	FIRE HYDRANT	DIP	DUCTILE IRON PIPE	R/W	RIGHT OF WAY
---	GAS LINE	⊙ GM	GAS / OIL WELL	DODI	DOUBLE GRATE CURB INLET	RCP	REINF CONCRETE PIPE
---	FIBER OPTIC CABLE UNDERGROUND	⊙ LP	GAS METER	DO	DOOR OPENING	RJ	RESTRAINED JOINT
---	POWER UNDERGROUND	⊙ P	PARKING COUN	DS	DOWNSPOUT	SGDI	SINGLE GRATE CURB INLET
---	TELEPHONE UNDERGROUND	⊙ TVUG	POWER MANHOLE	EJ	EXPANSION JOINT	SF	SQUARE FEET
---	TV UNDERGROUND	⊙ W	POWER POLE	EL	ELEVATION	SSCO	CLEANOUT
---	WATER LINE	⊙ PB	PULL BOX	FF	FINISH FLOOR	TC	TOP OF CURB
---	SANITARY SEWER LINE	⊙ SS	SANITARY MANHOLE	FL	FINISH GRADE	TG	TOP OF GRATE
---	FLOW LINE DITCH	⊙ SF	STEAM MANHOLE	FG	FLOWLINE	TJ	TOOLED JOINT
---	SILT FENCE	⊙ S	STORM MANHOLE	HB	HOSE BIB	TOF	TOP OF FOOTING
---		⊙ TPED	TELEPHONE MANHOLE	HDPE	HIGH DENSITY POLYETHYLENE	TP	TOP OF PAVEMENT
---		⊙ XFMR	TELEPHONE PEDESTAL	IJ	ISOLATION JOINT	TR	TOP OF RIM
---		⊙ WH	TRANSFORMER PAD	IRR	IRRIGATION	TS	TOP OF SIDEWALK
---		⊙ WM	VALVE	IST	INLET SEDIMENT TRAP	TW	TOP OF WALL
---		⊙	WATER HYDRANT	LF	LINEAR FEET	UNO	UNLESS NOTED OTHERWISE
---		⊙	WATER METER				
---		⊙	WATER WELL				
---		⊙	LIFT STATION MANHOLE				



03/10/2016 8:18:24 AM

10/27/2017 3:13:2017



Benchmark  
3/8" Iron Pin  
ELEV=693.68  
N=377606.4940  
E=2621653.7280

Benchmark  
3/8" Iron Pin  
ELEV=699.76  
N=377502.0890  
E=2622398.4440

Benchmark  
3/8" Iron Pin  
ELEV=693.49  
N=377237.4190  
E=2621652.3490

Benchmark  
3/8" Iron Pin  
ELEV=690.80  
N=378991.4990  
E=2622317.1060

Benchmark  
3/8" Iron Pin  
ELEV=693.11  
N=376926.5940  
E=2622459.4486

**LEGEND**

--- 660 ---	EXISTING MAJOR CONTOUR	⊕ BM	BENCH MARK	AI	AREA INLET	OHD	OVERHEAD DOOR
--- 662 ---	EXISTING MINOR CONTOUR	○ CO	CLEANOUT	BC	BACK OF CURB	PAVT	PAVEMENT
---	NEW MAJOR CONTOUR	⊕	DOWN GUY	CI	CAST IRON	PE	POLYETHYLENE
---	NEW MINOR CONTOUR	○ EP	EMERGENCY PHONE	CLR	CLEAR	PVC	POLY VINYL CHLORIDE
---	FENCE	⊕ FDC	FIBER OPTIC MANHOLE	CJ	CONSTRUCTION JOINT	R	RADIUS
---	TELEPHONE OVERHEAD	⊕ FH	FIRE DEPT CONNECTION	DB	DRAINAGE BASIN	RD	ROOF DRAIN
---	POWER LINE OVERHEAD	⊕ G	FIRE HYDRANT	DIP	DUCTILE IRON PIPE	R/W	RIGHT OF WAY
---	GAS LINE	⊕ GP	GAS / OIL WELL	DGDI	DOUBLE GRATE CURB INLET	RCP	REINFC CONCRETE PIPE
---	FIBER OPTIC CABLE UNDERGROUND	⊕ LP	GAS METER	DO	DOOR OPENING	RJ	RESTRAINED JOINT
---	POWER UNDERGROUND	⊕ PM	LIGHT POLE	DS	DOWNSPOUT	SGDI	SINGLE GRATE CURB INLET
---	TELEPHONE UNDERGROUND	⊕ P	PARKING COUNT	EJ	EXPANSION JOINT	SF	SQUARE FEET
---	TVUG	⊕ S	POWER MANHOLE	EL	ELEVATION	SJ	SAW JOINT
---	WATER LINE	⊕ T	PULL BOX	FF	FINISH FLOOR	TC	TOP OF CURB
---	SANITARY SEWER LINE	⊕ U	SANITARY MANHOLE	FG	FINISH GRADE	TG	TOP OF GRATE
---	FLOW LINE DITCH	⊕ V	STEAM MANHOLE	FL	FLOWLINE	TJ	TOOLED JOINT
---	SILT FENCE	⊕ W	STORM MANHOLE	HB	HOSE BIB	TOF	TOP OF FOOTING
		⊕ X	TELEPHONE MANHOLE	HDPE	HIGH DENSITY POLYETHYLENE	TP	TOP OF PAVEMENT
		⊕ Y	TELEPHONE PEDESTAL	IJ	ISOLATION JOINT	TR	TOP OF RIM
		⊕ Z	TRANSFORMER PAD	IRR	IRRIGATION	TS	TOP OF SIDEWALK
		⊕ AA	VALVE	IST	INLET SEDIMENT TRAP	TW	TOP OF WALL
		⊕ AB	WATER HYDRANT	LF	LINEAR FEET	UNO	UNLESS NOTED OTHERWISE
		⊕ AC	WATER METER				
		⊕ AD	WATER WELL				
		⊕ AE	LIFT STATION MANHOLE				

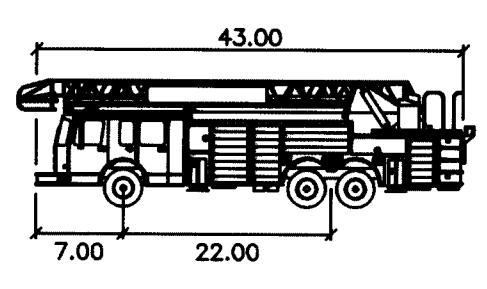
OWNER:  
BROKEN ARROW PUBLIC SCHOOLS  
ATTN: BOB TOLOMEO  
918.259.4300  
ratolomeo@baschools.org

PROJECT ADDRESS:  
301 WEST NEW ORLEANS STREET  
BROKEN ARROW, OKLAHOMA 74011

HYDRANT TEST RESULTS:  
STATIC: 91 PSI  
RESIDUAL: 88 PSI  
FLOW: 1,353 GPM  
FLOW @ 20 PSI: 7,469 GPM

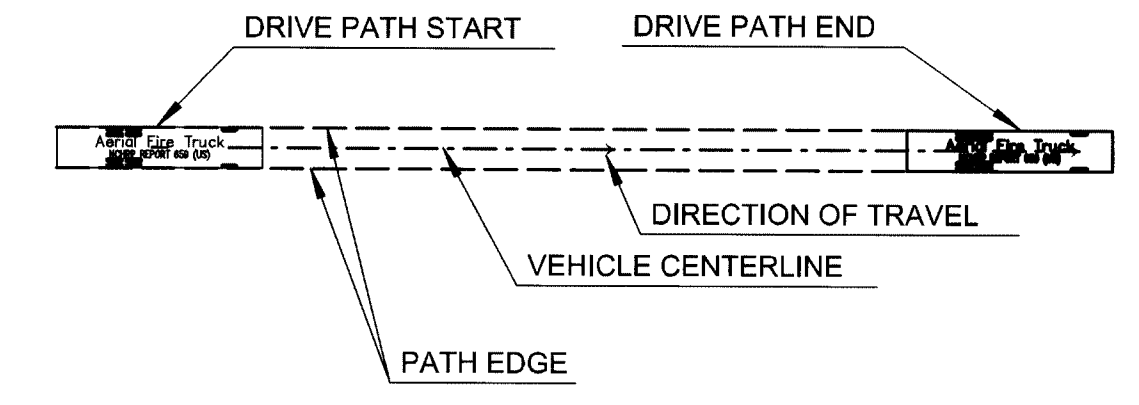
CONSTRUCTION TYPE: IIB  
W/ AUTOMATIC SPRINKLER  
BUILDING SQFT: 14, 735

APPENDIX B REQUIREMENTS:  
FIRE FLOW: 2,500 GPM  
625 GPM W/ 75% REDUCTION

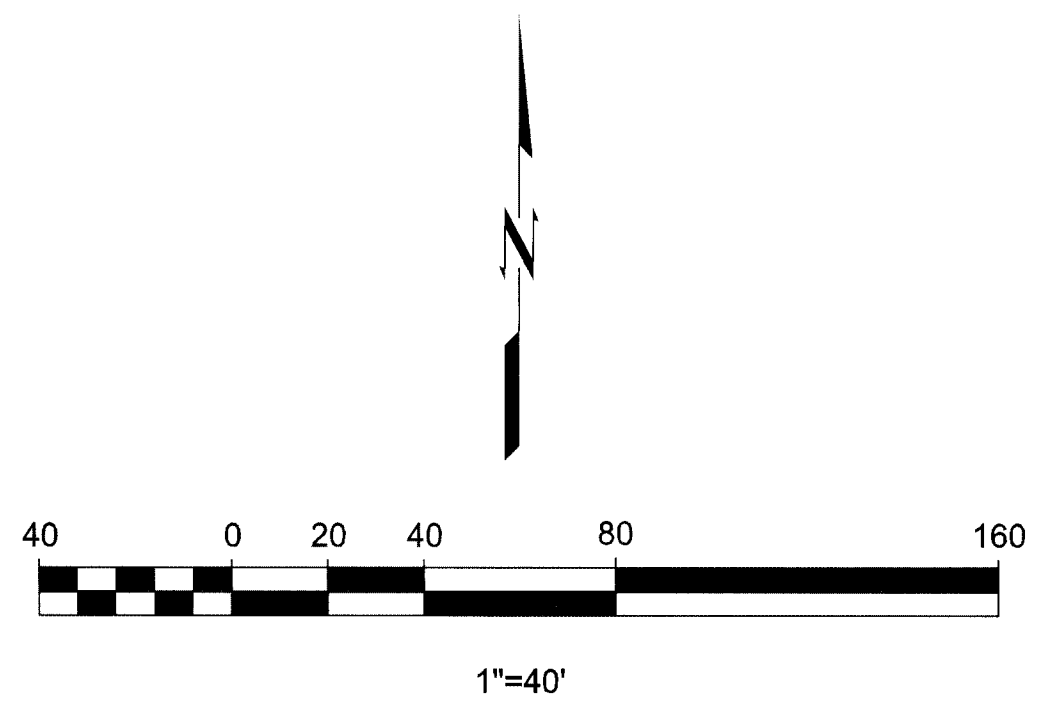


Aerial Fire Truck

Width	feet	: 8.50
Truck	feet	: 8.50
Lock to Lock Time	seconds	: 8.0
Steering Angle	degrees	: 33.3

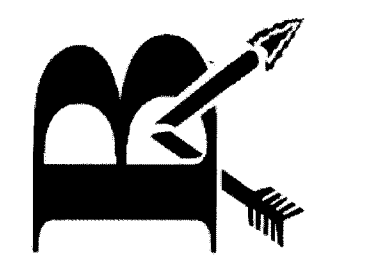


NOTE: THIS ENTIRE SHEET HAS BEEN ADDED



CAUTION  
NOTICE TO CONTRACTOR  
THE CONTRACTOR IS SPECIFICALLY CAUTIONED  
THE LOCATION AND ELEVATION OF EXISTING  
UTILITIES AS SHOWN ON THESE PLANS ARE BASED  
ON RECORDS OF THE VARIOUS UTILITY COMPANIES  
AND MEASUREMENTS TAKEN IN THE FIELD.  
THE INFORMATION IS NOT TO BE RELIED ON AS  
BEING EXACT OR COMPLETE. THE CONTRACTOR  
MUST CALL THE LOCAL UTILITY LOCATION CENTER  
AT LEAST 72 HOURS BEFORE ANY EXCAVATION TO  
REQUEST EXACT FIELD LOCATIONS OF THE UTILITIES

BROKEN ARROW  
PUBLIC SCHOOLS



2002 EAST 7TH STREET  
TULSA, OKLAHOMA 74104  
918.587.2322 | F 918.587.2285  
WWW.SELSERSCHAEFER.COM

SELSEr SCHEAFER ARCHITECTS

NUMBER: 03.10.17  
ISSUE DATE: 03.10.17  
REVISION: CITY COMMENTS



wallace

Wallace Engineering  
10000 S. Broadway  
Suite 200  
Tulsa, Oklahoma 74116  
918.438.1111  
OKLAHOMA, CA #1460  
EXP DATE 6/30/17

301 WEST NEW ORLEANS  
BROKEN ARROW, OK 74011

BROKEN ARROW PUBLIC SCHOOLS  
FRESHMAN ACADEMY EXPANSION

PROJECT NO. R16.030  
ISSUE DATE 01.25.17  
ISSUE 01  
DRAWN BY HW  
CHECKED BY AT  
REVISION C  
REVISION DATE 03.10.17

FIRE  
SITE PLAN

C404

## 2. GENERAL CORRESPONDENCE / NOTIFICATION



**Contact: Krista Flasch**  
**Director of Communications**  
**City of Broken Arrow**  
**Phone: (918) 259-2400, ext. 5309**  
**Mobile: (918) 409-7771**

## **Resurfacing Project on Omaha Street to Begin May 23**

**Broken Arrow, Okla. (5/19/2017)** – The City of Broken Arrow Streets and Stormwater Department is expected to begin repaving a one-mile stretch of Omaha (51<sup>st</sup>) Street from Elm Place to Aspen Avenue starting May 23. The project is anticipated to be completed in mid-June, weather permitting.

During the construction work, traffic will be restricted to one lane of travel, depending on which side of the road is being worked on. Detour signs will be in place to direct drivers around the construction. We appreciate drivers' patience while this necessary roadwork is completed.

The Omaha Street repaving project costs \$85,000 and is being paid for through 2014 General Obligation Bonds.

###